



LEASE/ SUBLEASE BROCHURE

4725 E 2ND STREET, LONG BEACH, CA 90803



**Your Entrepreneurial Real Estate Partner.
Building Wealth Together.**



4725 E 2ND STREET

LONG BEACH, CA 90803



PROPERTY HIGHLIGHTS

- Heart of Belmont Shore
- Walking distance to Pacific Ocean & Great Restaurants and Shops
- Sublease expires May 2019
- Contact Broker For Showing Instructions

LEASE RATE: \$4.50 SF/MONTH (NNN)



DOUG SHEA

562.296.1304

dshea@incocommercial.com

BRE #00875427

ELIZABETH DANA

562.296.1312

elizabeth@incocommercial.com

BRE #01844794

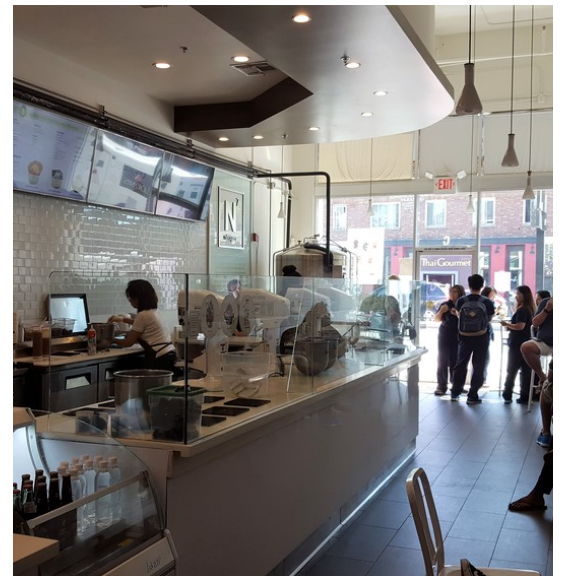
Your Entrepreneurial Real Estate Partner. Building Wealth Together.

2

INCOCOMMERCIAL.COM
6621 E. PACIFIC COAST HWY, SUITE 280
LONG BEACH, CA 90803
562.296.1304
DRE# 01359006



4725 E 2ND STREET
LONG BEACH, CA 90803



Your Entrepreneurial Real Estate Partner. Building Wealth Together.

3

DOUG SHEA

562.296.1304

dshea@incocommercial.com

BRE #00875427

ELIZABETH DANA

562.296.1312

elizabeth@incocommercial.com

BRE #01844794

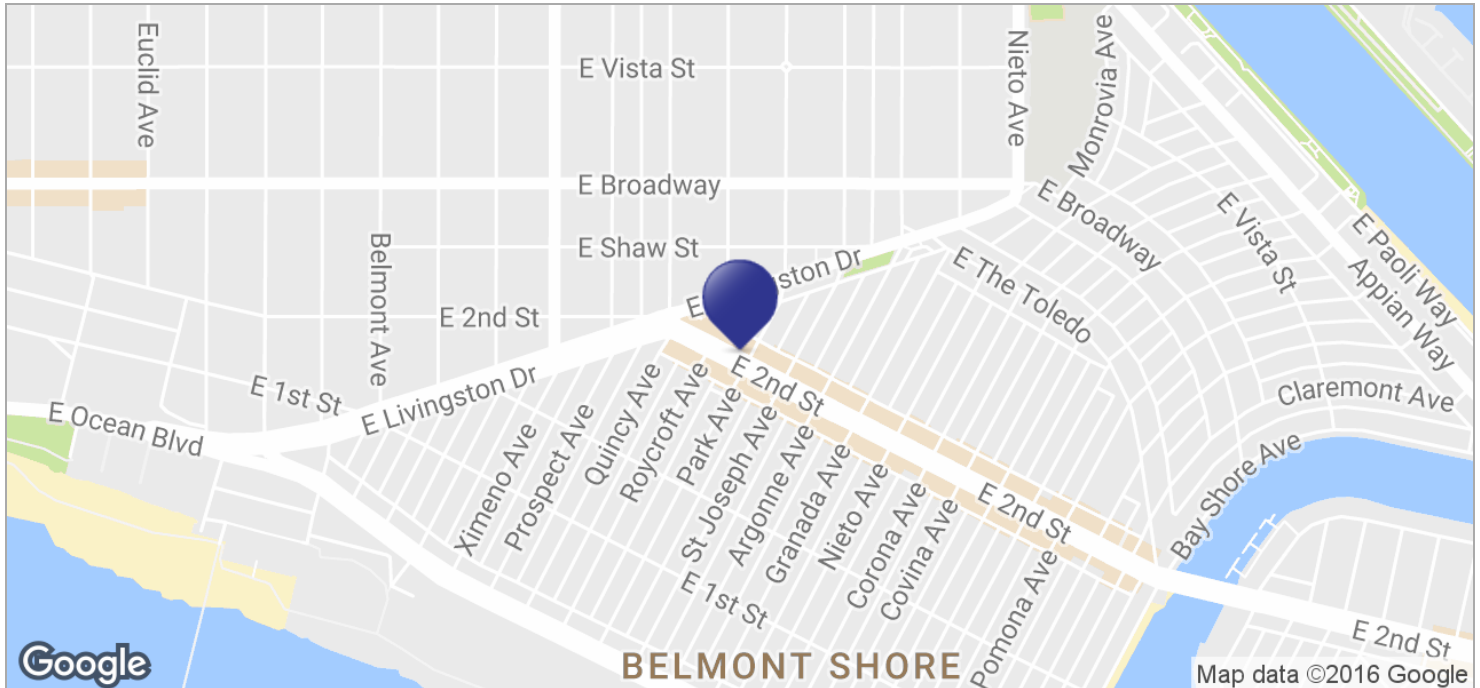
INCOCOMMERCIAL.COM
6621 E. PACIFIC COAST HWY, SUITE 280
LONG BEACH, CA 90803
562.296.1304
DRE# 01359006

This information contained herein was obtained from third parties, and has not been independently verified by real estate brokers. Buyers and Tenants should have experts of their choice inspect the property and verify all information. Real Estate Brokers are not qualified to act as or select experts with respect to legal, tax environmental, building construction, soil drainage or other such matters.



4725 E 2ND STREET

LONG BEACH, CA 90803



Your Entrepreneurial Real Estate Partner. Building Wealth Together.

4

DOUG SHEA

562.296.1304

dshea@incocommercial.com

BRE #00875427

ELIZABETH DANA

562.296.1312

elizabeth@incocommercial.com

BRE #01844794

INCOCOMMERCIAL.COM

6621 E. PACIFIC COAST HWY, SUITE 280

LONG BEACH, CA 90803

562.296.1304

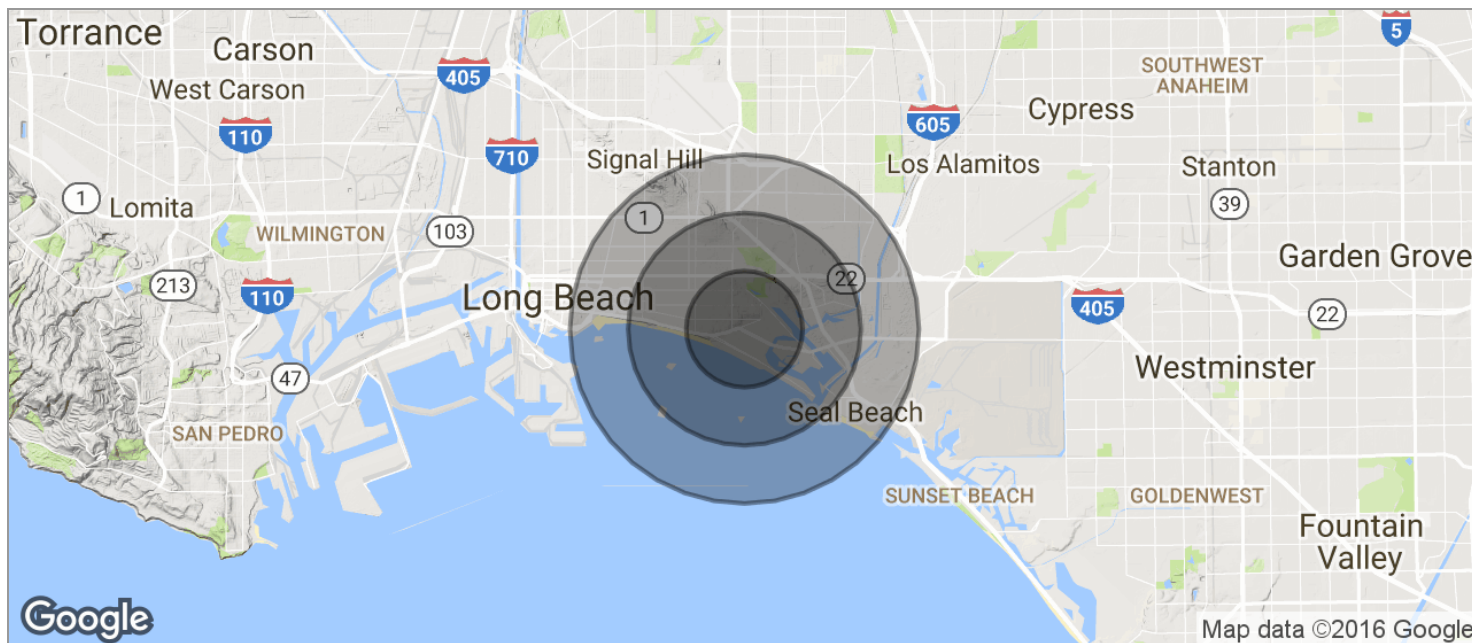
DRE# 01359006

This information contained herein was obtained from third parties, and has not been independently verified by real estate brokers. Buyers and Tenants should have experts of their choice inspect the property and verify all information. Real Estate Brokers are not qualified to act as or select experts with respect to legal, tax environmental, building construction, soil drainage or other such matters.



4725 E 2ND STREET

LONG BEACH, CA 90803



POPULATION	1 MILE	2 MILES	3 MILES
TOTAL POPULATION	18,406	72,754	172,118
MEDIAN AGE	41.4	37.3	34.4
MEDIAN AGE (MALE)	41.2	37.8	34.3
MEDIAN AGE (FEMALE)	41.5	36.9	34.6
HOUSEHOLDS & INCOME	1 MILE	2 MILES	3 MILES
TOTAL HOUSEHOLDS	9,514	33,385	68,828
# OF PERSONS PER HH	1.9	2.2	2.5
AVERAGE HH INCOME	\$103,239	\$89,352	\$77,203
AVERAGE HOUSE VALUE	\$749,030	\$604,797	\$576,281

* Demographic data derived from 2010 US Census

Your Entrepreneurial Real Estate Partner. Building Wealth Together.

5

DOUG SHEA

562.296.1304

dshea@incocommercial.com

BRE #00875427

ELIZABETH DANA

562.296.1312

elizabeth@incocommercial.com

BRE #01844794

INCOCOMMERCIAL.COM

6621 E. PACIFIC COAST HWY, SUITE 280

LONG BEACH, CA 90803

562.296.1304

DRE# 01359006

This information contained herein was obtained from third parties, and has not been independently verified by real estate brokers. Buyers and Tenants should have experts of their choice inspect the property and verify all information. Real Estate Brokers are not qualified to act as or select experts with respect to legal, tax environmental, building construction, soil drainage or other such matters.